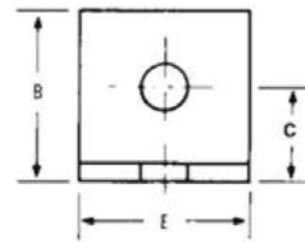
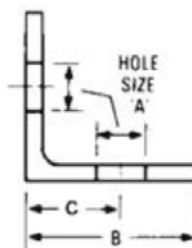




ANGLE BRACKET
PLAIN & ELECTRO-GALVANIZED



ANGLE BRACKET - DIMENSIONAL DATA



| | |
|------------------|--|
| Material | Carbon steel, also available in 304 and 316 stainless steel. |
| Finish | Plain or electro-galvanized. |
| Service | Designed for attaching hanger rod to the side of beams or walls. |
| Approvals | Complies with Federal Specification WW-H-171-E (Type# 35), A-A-1192 A (Type# 34), and MSS SP-58 and 7SP-69 (Type# 34). |
| Ordering | Specify rod size, figure number and finish. |
| Notes | Also available in stainless steel. |

| Size | Hole Size A | Material Thickness | B | C | D | Weight Each (lbs) | Max Rec Load (lbs) |
|--------|-------------|--------------------|--------|--------|-------|-------------------|--------------------|
| 3/8-16 | 7/16 | 8ga | 2-1/16 | 1-5/16 | 1-1/2 | 0.225 | 300 |
| 1/2-13 | 9/16 | 3ga | 2-1/8 | 1-3/8 | 1-1/2 | 0.330 | 560 |
| 5/8-11 | 11/16 | 3/8 | 2-3/4 | 1-5/8 | 2-1/2 | 1.130 | 900 |
| 3/4-10 | 13/16 | 3/8 | 3-1/4 | 2-3/16 | 2-1/2 | 1.390 | 900 |